



 POLITECNICO DI MILANO

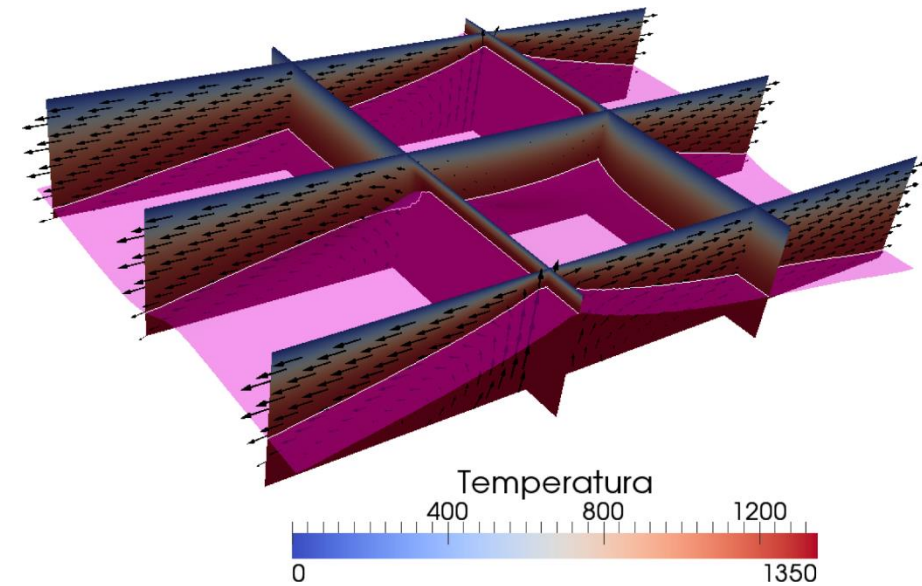


PAA GEO
e

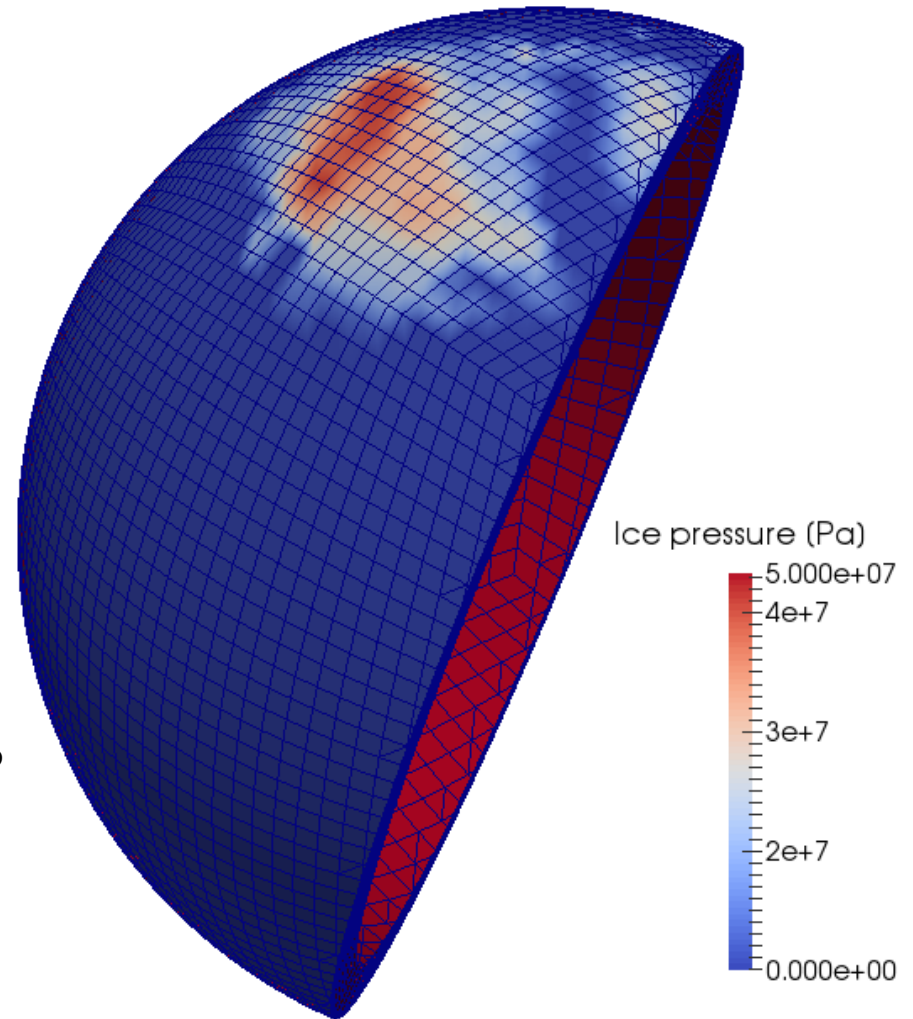
**Proposte di Tesi Magistrale:
Geodinamica e Idrodinamica**



	n.	CAT	SEM	SSD	COD	INSEGNAMENTO	CFU
ANNO 1	1	OB	1	MAT/05	95958	Real and functional analysis	8
	2	OB	1	ING-INF/05	95959	Algorithms and parallel computing	10
	3	ING	1	ICAR/01	95962	Fluids labs	10
	4	MTM	2	MAT/05	95963	Advanced partial differential equations	8
	5	MA	2	MAT/08	95964	Numerical analysis for partial differential equations	10
	6	MA	2	MAT/08	95965	Advanced programming for scientific computing	10
							Totale 1° anno
	n.	CAT	SEM	SSD	COD	INSEGNAMENTO	CFU
ANNO 2	7	MA	1	MAT/07+MAT/08	97634	Computational fluid dynamics	10
	8	MTM	1	ICAR/07+ICAR/08	89116	Meccanica computazionale per i geomateriali	10
	9	MTM	1	MAT/08+SECS-S/01	98516	Numerical and statistical methods in geosciences	10
	10	SC	1	GEO/11	98637	Geophysical data processing	8
	11	ING	2	ICAR/01	98513	Groundwater hydraulics	8
	12	SC	2	ICAR/09	98512	Engineering seismology	8
				1 o 2		86304	Prova finale
						Totale 2° anno	66



- Modelli visco-elasto-plastici
- Modelli di melting
- Tecniche di raffinamento di griglia per VEP
- Calcolo parallelo



Tesi in collaborazione con INRIA Bordeaux

- Discrete equations for long wave propagation on unstructured grids
- Wave energy converters hydrodynamics : a Boussinesq-type approach
- Adaptive mesh movement with Telemac : a feasibility study (in collaborazione anche con EDF)